



PRESCHOOL ENRICHMENT

Preschool Enrichment provides a developmentally-based program that offers a variety of social, physical, and cognitive experiences. Building on a child's natural interests, the challenging and well-planned activities are appropriate for each child's developmental level.

Program runs from September through June.



ANNUAL PROGRAM RATES:

2022-23

Annual Registration Fee: \$90 (1st child)
\$55 per each additional child
Fees are nonrefundable.

	T/Th \$176	MWF \$222	MWF \$264	T/W/Th/F \$352	M/T/W/Th \$352
Age 3	9-11:45 a.m.	9-11:30 a.m.			
	3+ 8:45-11:45 a.m.				
Age 4	12:45-3:45 p.m.		8:45-11:45 a.m. OR 12:45-3:45 p.m.	8:45-11:45 a.m.	12:45-3:45 p.m.

Preschool Enrichment is housed at Jackson Early Childhood Center
32025 Lyndon Livonia, MI 48154

For more information, please call **734-744-2813**,
or email Rosie Rivas-Martinez at rrivasma@livoniapublicschools.org.



Pre-K for Three-Year-Olds:

- **3 years old on or before September 1, 2022**
- **Potty trained**

Pre-K for Four-Year-Olds:

- **4 years old on or before September 1, 2022**
- **Potty trained**

SCHOOL-AGE CHILD CARE (SACC)

School-Age Child Care (SACC) is the before- and- after-school program for students in kindergarten through sixth grades attending Livonia Public Schools. SACC offers children a selection of individual and group activities in a safe and positive environment.

The program is available at all LPS K-4 and 5-6 buildings.

ANNUAL PROGRAM RATES:

2022-23

Annual Registration Fee: \$90 (1st child)

\$55 per each additional child

Fees are nonrefundable.

Families must register for a minimum of five consecutive sessions per week (i.e. 5 a.m. sessions; 5 p.m. sessions; or 5 a.m. and 5 p.m. sessions).

Childcare costs are based on the contracted schedule submitted at the time of registration. Families using the program for five a.m. and/or p.m. sessions per week receive a 10% discount on each additional full-time child.

Tuition is charged monthly, and payments are due on or before the 10th of each month. Additional information will be provided at registration.

*PROGRAM RATES: 2022-23

	K-4 Schools	5-6 Schools (including Webster)
AM Session (7:00 a.m. - school start)	\$10.50/day	\$9.50/day
PM Session (School dismissal - 6 p.m.)	\$12.50/day	\$13.50/day
Half Day Session	\$20 additional cost	\$20 additional cost

Locations, transportation, and program offerings are subject to change based on the District's final budget determinations.

For more information, please contact the SACC office: 734-744-2966
Mcapener@livoniapublicschools.org | Isoto@livoniapublicschools.org



EARLY CHILDHOOD CHILD CARE

Childcare with preschool component, housed at Jackson Early Childhood Center

ANNUAL REGISTRATION FEE:

2022-23

\$90 (1st child)

\$55 per each additional child

Fees are nonrefundable.

	<i>Full time, daily rate</i>	<i>Part time, daily rate</i>
<i>Infant- 35 months</i>	\$62/day	\$71/day
<i>36 months +</i>	\$51/day	\$60/day

Center provides:

- Breakfast, morning, and afternoon snack
- Gym and gross motor room
- Outdoor play structures/blacktop
- Library

For more information, please call 734-744-2813,
or email Rosie Rivas-Martinez at rrivasma@livoniapublicschools.org.





YOUNG FIVES CHILD CARE

Childcare for Young Fives students, before and/or after Young Fives class time

 Housed at Jackson Early Childhood Center



ANNUAL REGISTRATION FEE:

2022-23

\$75 (1st child)

\$40 per each additional child

Fees are nonrefundable.

7-8 a.m.	11:07 a.m. - 3:07 p.m.	3:07 - 6:00 p.m.	AM + Y5 + PM
\$9.25/day	\$17.00/day	\$11.25/day	\$37.50/day

Minimum of three days per week required.

Care includes:

- Theme-related activities to enhance social, emotional, and cognitive development
- Indoor and outdoor gross motor opportunities
- Focus on fostering self-help skills for future success

For more information, please call
734-744-2813,
 or email Rosie Rivas-Martinez at
rrivasma@livoniapublicschools.org.

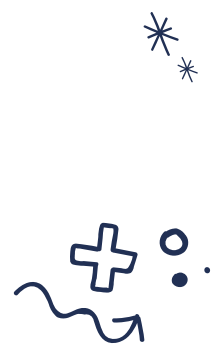


4/7/2022



SUMMER SACC 2022

June 22 - August 18, 2022 | 7:30 a.m. - 5:00 p.m.
Buchanan Elementary



\$50 per day, per child

**Non-refundable registration fee:
\$45;
\$40 per additional child**

**For more information, please contact the
SACC office: 734-744-2966**

Mcapener@livoniapublicschools.org
Isoto@livoniapublicschools.org

